



Color Variants

BO450111
Stainless steel-backed full glass door
Width 60 cm

Included accessories

1 x enamel baking tray.
suit. pyrol. clean..
1 x glass pan.
1 x grill shelf.
1 x pluggable meat probe.

Optional accessories

BA056133
Baking stone
BS020002
Pizza paddle, set of 2
GN340230
Gastronorm roaster in cast aluminium

Installation Accessories

BA476110
Handle bar, stainless steel

Product Variants

BO451111
Oven 400 series
Stainless steel-backed full glass door
Width 60 cm
Left-hinged
controls at the top

BO450111
Oven 400 series
Stainless steel-backed full glass door
Width 60 cm
Right-hinged
controls at the top

Handleless door / automatic door opening
Pyrolytic system
13 heating methods, with core temperature probe and baking stone function
TFT touch display
Panel-free appliance with surface control module
Electronic temperature control from 30 °C to 300 °C

Heating methods

Hot air.
Eco hot air.
Top + bottom heat.
Top heat.
Bottom heat.
Hot air+ bottom heat.
Full surface grill + circulated air.
Full surface grill.
Compact grill.
Baking stone function.
Roaster function.
Dough proofing.
Defrosting.

Handling

Automatic door opening.
Rotary knob and TFT touch display operation.
Clear text display in 25 languages.
Option to save individual recipes (incl. core temperature probe).
Information key with use indications.
Side-opening door opens up to 180° angle.

Features

Core temperature probe with automatic shut-off.
Baking stone socket.
Actual temperature display.
Rapid heating.
Timer functions: cooking time, cooking time end, timer, stopwatch, long-term timer.
60 W halogen light on the top.
10 W halogen light on the side.
Enamelled side shelf supports with 4 tray levels, pyrolysis-safe.

Safety

Thermally insulated door with quadruple glazing.
Child lock.
Safety shut-off.
Cooled housing with temperature protection.

Cleaning

Pyrolytic system.
Gaggenau enamel.
Heated air cleaning catalyser.

Planning notes

Door hinge not reversible.
The door panel surface of the appliance extends 47 mm from the furniture cavity.
If the handle (optional accessory) is retrofitted, the outer edge of the door handle extends 94 mm from the furniture cavity.
Consider the overhang, incl. the door handle where applicable, when planning to open drawers next to the appliance.
When planning a corner solution, pay attention to the 90° door opening angle.
To achieve the 550 mm installation depth, the connection cable needs to follow the slanted edge on the lower right hand corner of the housing.

Characteristics

Color / Material Front
Stainless steel
Construction type
Built-in
Integrated Cleaning system
Pyrolytic
Required niche size for installation (HxWxD)
590 x 560 x 550
Dimensions of the product (mm)
595 x 590 x 547
Control Panel Material
without panel
Door Material
Stainless steel behind glass
Net weight (kg)
56.0
Usable volume of cavity (l)
76
Cooking method first cavity
First cavity material
Temperature control
electronic
Number of interior lights
2
Approval certificates
CE, VDE
Length of electrical supply cord (cm)

Consumption and connection features

Number of cavities (2010/30/EC)
1
Energy efficiency class (2010/30/EC)
A
Energy consumption per cycle conventional (2010/30/EC)
1.25
Energy consumption gas oven per cycle conventional (2010/30/EC)
Energy consumption per cycle forced air convection (2010/30/EC)
0.92
Energy consumption gas oven per cycle forced air convection (2010/30/EC)
Energy efficiency index (2010/30/EC)
105.7
Electrical connection rating (W)
3700
Current (A)
16
Voltage (V)
220-240
Frequency (Hz)
50
Plug type
fixed connection, no plug

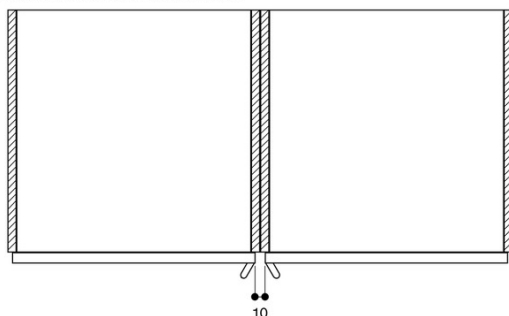
created on 2015-04-09
Page 1

The mains socket needs to be planned outside of the built-in niche.

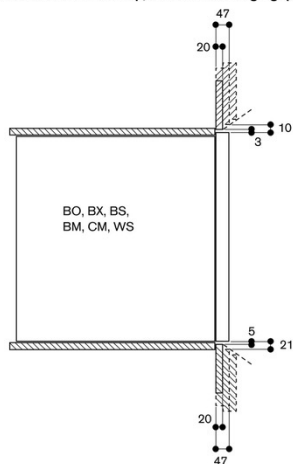
Connection

Total connected load 3.7 kW.
Plan a connection cable.

When installed next to each other



Cross section of the top/bottom door edge gaps



Air inlet cross section at the door edges

