



Color Variants

BO480110
Stainless steel-backed full glass door
Width 76 cm

Included accessories

1 x enamel baking tray.
suit. pyrol. clean..
1 x rotary spit.
1 x grill shelf.
1 x grill tub with grid.
1 x pluggable meat probe.

Optional accessories

BA058113
Heating element for baking stone and
Gastronorm roaster
BA058133
Baking stone
BS020002
Pizza paddle, set of 2
GN340230
Gastronorm roaster in cast aluminium

Installation Accessories

BA478110
Handle bar, stainless steel

Product Variants

BO481110
Oven 400 series
Stainless steel-backed full glass door
Width 76 cm
Left-hinged
controls at the top

BO480110
Oven 400 series
Stainless steel-backed full glass door
Width 76 cm
Right-hinged
controls at the top

Handleless door / automatic door
opening
Pyrolytic system
17 heating methods, with core
temperature probe, rotisserie spit
and baking stone function
TFT touch display
Panel-free appliance with surface
control module
Electronic temperature control from
30 °C to 300 °C
110 litres net volume

Heating methods

Hot air.
Eco hot air.
Top + bottom heat.
Top + 1/3 bottom heat.
Top heat.
1/3 top + bottom heat.
Bottom heat.
Hot air + bottom heat.
Hot air + 1/3 bottom heat.
Full surface grill + circulated air.
Full surface grill.
Compact grill.
Baking stone function.
Roaster function.
Dough proofing.
Defrosting.
Keeping warm.

Handling

Automatic door opening.
Rotary knob and TFT touch display
operation.
Clear text display in 25 languages.
Option to save individual recipes (incl.
core temperature probe).
Information key with use indications.
Side-opening door opens up to 180°
angle.

Features

Core temperature probe with automatic
shut-off.
Rotisserie spit.
Baking stone socket.
Actual temperature display.
Rapid heating.
Timer functions: cooking time, cooking
time end, timer, stopwatch, long-term
timer.
60 W halogen light on the top.
2 x 10 W halogen light on the side.
Enamelled side shelf supports with 5
tray levels, pyrolysis-safe.

Safety

Thermally insulated door with
quadruple glazing.
Child lock.
Safety shut-off.
Cooled housing with temperature
protection.

Cleaning

Pyrolytic system.
Gaggenau enamel.
Heated air cleaning catalyser.

Planning notes

Door hinge not reversible.
The door panel surface of the
appliance extends 47 mm from the
furniture cavity.
If the handle (optional accessory)
is retrofitted, the outer edge of the
door handle extends 94 mm from the
furniture cavity.

Characteristics

Color / Material Front
Stainless steel
Construction type
Built-in
Integrated Cleaning system
Pyrolytic
Required niche size for installation
(HxWxD)
665 x 724 x 550
Dimensions of the product (mm)
670 x 752 x 547
Control Panel Material
without panel
Door Material
Stainless steel behind glass
Net weight (kg)
77.0
Usable volume of cavity (l)
110
Cooking method first cavity
Baking stone function, Bottom
heat, Bottom heating, 1/3 top heat.,
Conventional heat, Defrost, Dough
proving setting, Full width grill, Half
width grill, Hot Air, Hot air and 1/1
bottom heating, Hot air and 1/3 bottom
heating, Hot Air-Eco, Hot air grilling,
Roaster function, Top heat, Top heating,
1/3 bottom heat., warming
First cavity material
Enamel
Temperature control - cavity 1
electronic
Number of interior lights
3
Approval certificates
CE, VDE
Length of electrical supply cord (cm)

Consumption and connection features

Number of cavities (2010/30/EC)
1
Energy efficiency class (2010/30/EC)
Energy consumption per cycle
conventional (2010/30/EC)
Energy consumption gas oven per cycle
conventional (2010/30/EC)
Energy consumption per cycle forced
air convection (2010/30/EC)
Energy consumption gas oven per cycle
forced air convection (2010/30/EC)
Energy efficiency index (2010/30/EC)
Electrical connection rating (W)
5520
Current (A)
25
Voltage (V)
220-240
Frequency (Hz)
50
Plug type
fixed connection, no plug

created on 2015-04-01
Page 1

Consider the overhang, incl. the
door handle where applicable, when
planning to open drawers next to the
appliance.

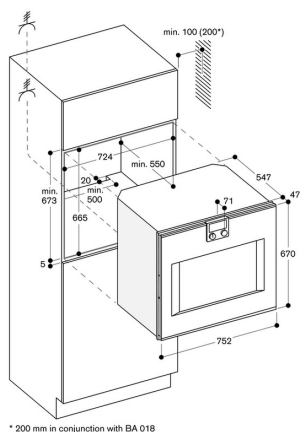
When planning a corner solution, pay
attention to the 90° door opening
angle.

To achieve the 550 mm installation
depth, the connection cable needs to
follow the slanted edge on the lower
right hand corner of the housing.
The mains socket needs to be planned
outside of the built-in niche.

Connection

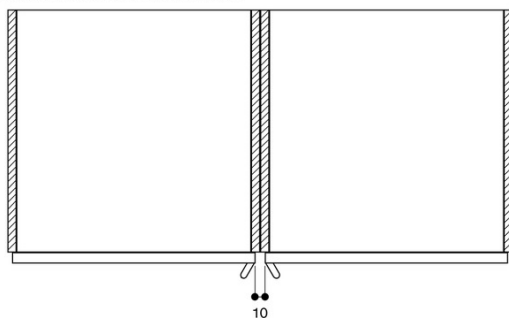
Energy efficiency class B.
Total connected load 5.5 kW.
Plan a connection cable.

BO480110
Oven 400 series
Stainless steel-backed full glass door
Width 76 cm
Right-hinged
controls at the top
created on 2015-04-01
Page 2

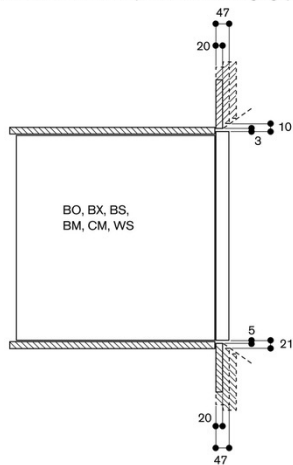


* 200 mm in conjunction with BA 018

When installed next to each other



Cross section of the top/bottom door edge gaps



Air inlet cross section at the door edges

